

AUSTRALIAN
LACE GUILD



NSW BRANCH INC

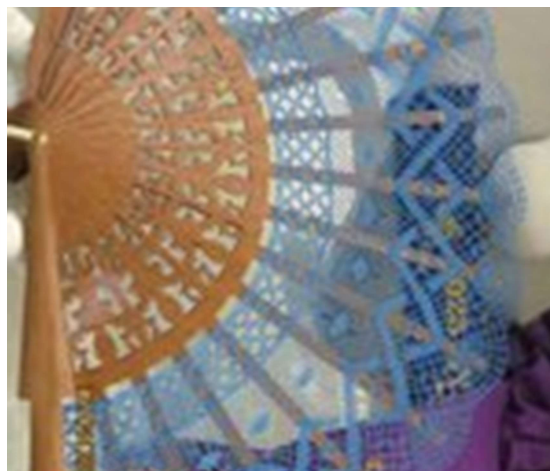
Lace_E News
Volume #6



NEWS FROM THE COMMITTEE

We have some updates to share.

FINISH READING ON PG. 2



WELCOME

Our 6th edition of Lace_E
News - the ALG NSW
Branch's monthly newsletter.



Website:

[https://www.lacemaking.com.
au/sydney.html](https://www.lacemaking.com.au/sydney.html)



RAS COMPETITION

Thank you for participating and
exhibiting your wonderful lace.

FINISH READING ON PG. 4

SPACES MAKE LACE

Events and competition news.

FINISH READING ON PG. 7





Dear Members,

Welcome to our monthly newsletter of Lace_E News. This month was filled with Easter, public holidays and, of course, the Sydney Royal Easter Show's Arts and Crafts competition where we enjoyed looking at the wonderful entries. We are grateful to see that there was a variety of entries that exhibited beautiful lace.

During the April Lace Day at Linnwood House Barbara hosted a mini workshop on "Easter Mystery Bobbin Lace" and members enjoyed the bobbin lace session. Look at the beautiful flower below by Norma from the workshop.



The next meeting for Social Lace is Sunday, 7th May at the Powerhouse Museum café starting from 10am. Please feel free to join us for a casual lace session. We also wanted to add a little reminder about the next competition and show on the 19th to 21st which is The Dubbo Show. There is also another opportunity to enter a fun competition with 2023 Spaces Make Lace (keep on reading in the newsletter).

We're also grateful that there are some lovely groups and individual who continue to demonstrate and showcase lace in our community. Recently, the Orange ladies were at Bathurst heritage trades trail – you can see a photo on the cover page.

If you were at the April Lace Day, you might have seen some rehearsals happening so we're sharing the information below.



We continue to encourage you to get in touch with the committee if you have anything you'll like to share for our future newsletters by emailing: laceguildnsw@gmail.com

Thank you,

NSW Branch Committee

St George Art Society Exhibition

Isabel exhibits 3 lace works on and will be demonstrating on the 6th of May. Please see the flyer below:

STGEORGE Art SOCIETY INC
FOR THE ENCOURAGEMENT OF ART

**Members' Art Exhibition
Tempe House**

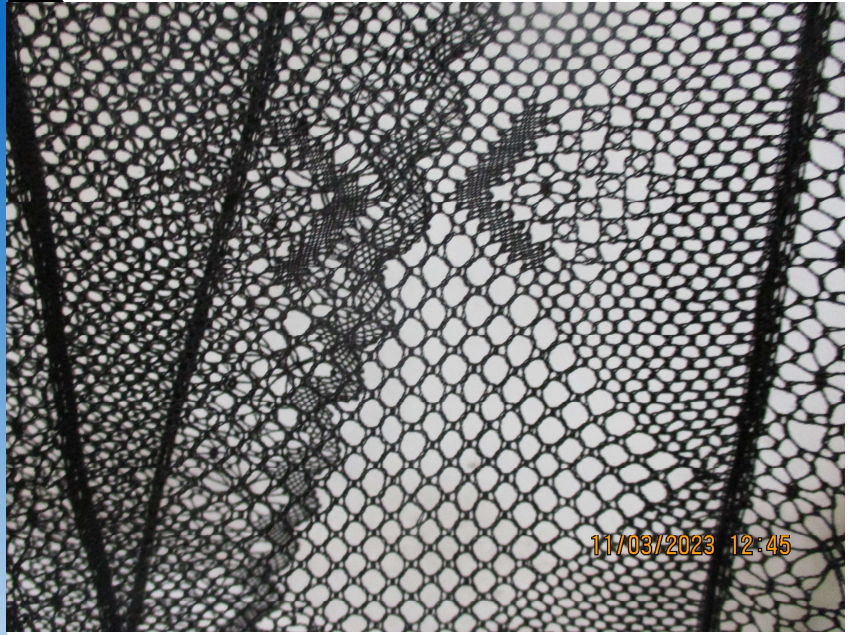
**Saturday 29th April To Sunday 7th May
1 Princes Hwy, Wolli Creek**

Open 10am to 5pm

**Opening
Saturday 29th April at 3pm**



“Beautiful
lace on
display at the
Sydney Royal
Easter Show.”



Royal Agricultural Society Competition

The Sydney Royal Easter provided a great opportunity for lacemakers to showcase our art and craft. Thank you to all the members who have joined the competition in the lace category to exhibit lace to such a wide audience. We're amazing at the quality and variety that was exhibited this year. Many congratulations to the winning entries.

Please see below for some photos:





Camden Show

Like many local Lace groups, Campbelltown Group recently supported their local Camden Show entering a small number of lace pieces. One of our members, Sarah Myers, was amply rewarded with Most Outstanding Exhibit Needlework and Best Exhibit Creative Hand and Machine Embroidery. The winning entry.... a humble bookmark worked well. Congratulations!



Spaces Make Lace 2023

Date: Saturday and Sunday, 4th-5th November 2023

Where: McCrossins Mill Museum, Uralla NSW

Events Planned:

Hands on study sessions of lace items from the Janice Jones Collection dating from the mid-16th to the mid-18th centuries, which are not on display.

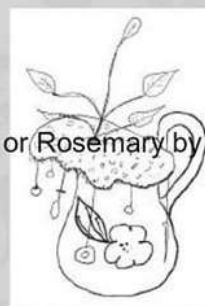
Talks about the history and evolution of bobbin, needle and other lace making techniques being explored by today's artists.

Exhibitions with guest artists and lace makers in the Mill and around the town.

Competition:

Crazy Milk Jug Covers that must be:

1. Handmade by the entrant and delivered to Vicki or Rosemary by 28th October 2023.
2. Over the top but functional.
3. Weighted with beads or similar.
4. Lacey, as long as holes are large-insect proof.
5. Colour is preferred – the brighter the better!
6. Must be transportable and easily displayed even if your imagination has run riot!



Contact for more information:

Vicki Taylor and Rosemary Shepherd

Email Vicki jarrikinlace@gmail.com Ph: 0439 787 231

Email Rosemary roses@southernphone.com.au Ph: 0408 621 203

Image and photography credit: Sheila, Pauline, Barbara, Robyn and Lisa.

